

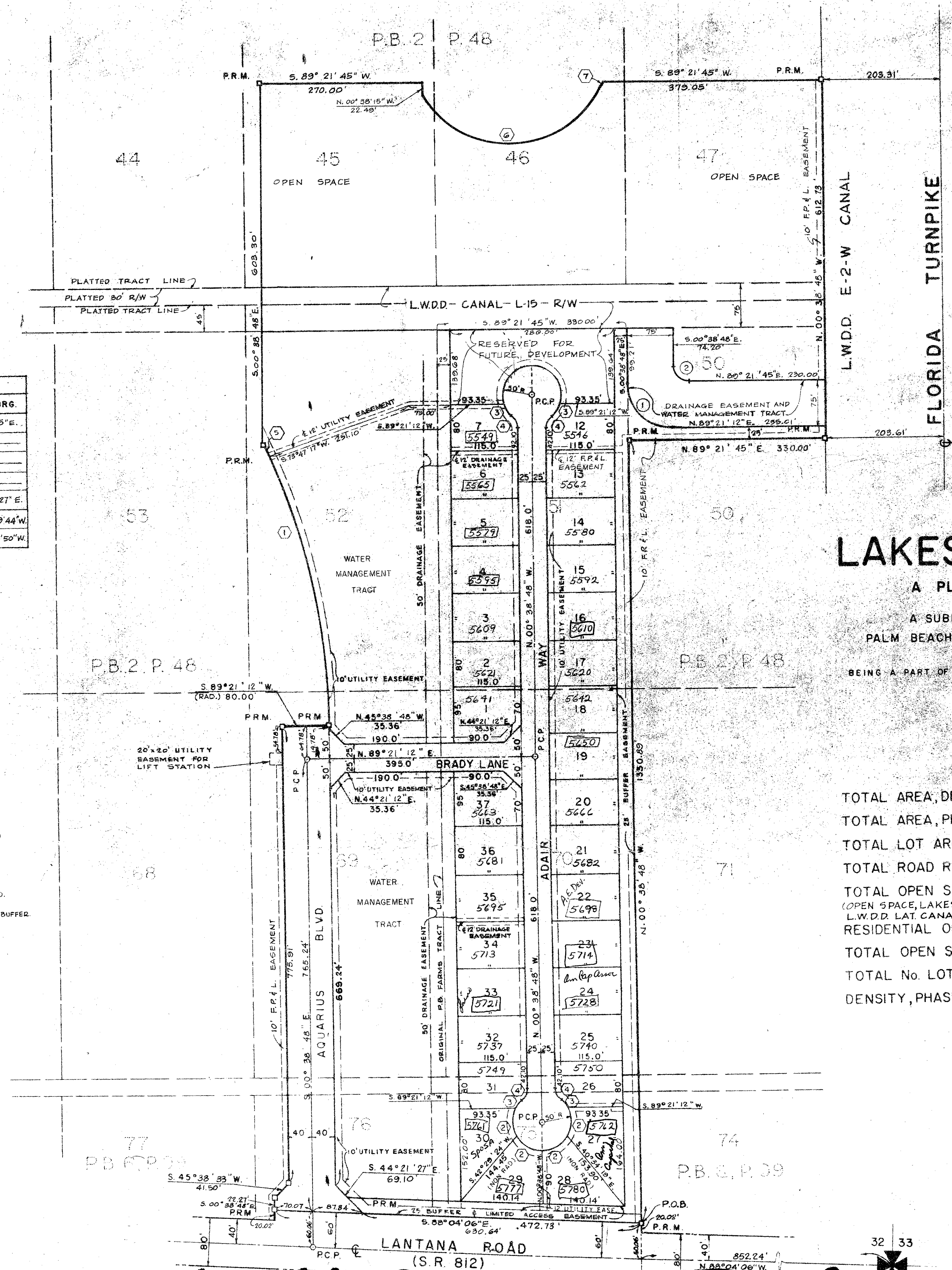
94

CURVE DATA TABLE						
NO.	ARC LTH.	RADIUS	DELTA	TAN.	L. CH.	CH. BRG.
①	501.64'	1125.00'	25° 32' 54"	255.06'	497.49'	S. 18° 25' 15" E.
②	48.48'	50.00'	55° 33' 00"	26.33'	46.60'	
③	23.64'	50.00'	27° 06' 23"	12.05'	23.42'	
④	21.03'	25.00'	48° 11' 23"	11.18'	20.41'	
⑤	19.14'	1125.00'	00° 58' 28"	9.57'	19.14'	S. 25° 42' 27" E.
⑥	380.68'	170.00'	128° 18' 09"	350.80'	305.98'	S. 87° 09' 44" W.
⑦	11.85'	160.00'	04° 16' 22"	5.97'	11.93'	S. 25° 08' 50" W.

WATER MANAGEMENT TRACT CURVE DATA

① R = 75.00'	② R = 25.00'
Δ = 89° 59' 27"	Δ = 89° 59' 27"
C = 106.06'	C = 35.35'
T = 74.99'	T = 25.00'
L = 117.80'	L = 39.27'

- P.R.M. INDICATES PERMANENT REFERENCE MONUMENT
 P.C.P. INDICATES PERMANENT CONTROL POINT
- NOTES
- BUILDING SETBACK LINES SHALL BE AS REQUIRED BY PALM BEACH COUNTY ZONING BOARD REGULATIONS.
 - THERE SHALL BE NO BUILDINGS OR OTHER STRUCTURES PLACED ON UTILITY EASEMENTS.
 - THERE SHALL BE NO BUILDINGS OR ANY KIND OF CONSTRUCTION, OR TREES OR SHRUBS PLACED ON DRAINAGE EASEMENT.
 - EASEMENTS ARE FOR PUBLIC UTILITY, UNLESS OTHERWISE NOTED.
 - NO CONSTRUCTION SHALL BE ALLOWED WITHIN THE 25' BOUNDARY BUFFER.



PHASE IA
LAKES OF LANTANA
 A PLANNED UNIT DEVELOPMENT
 A SUBDIVISION OF A PORTION OF BLOCK 33
 PALM BEACH FARMS COMPANY, PLAT BOOK 2, PAGE 48
 BEING A PART OF SECTION 32, TOWNSHIP 44 SOUTH, RANGE 42 EAST
 PALM BEACH COUNTY, FLORIDA

TOTAL AREA, DEVELOPMENT	462.85 ACRES
TOTAL AREA, PHASE IA	29.52 ACRES
TOTAL LOT AREA, PHASE IA	7.81 ACRES
TOTAL ROAD R/W AREA, PHASE IA	3.65 ACRES
TOTAL OPEN SPACE, PHASE IA	18.06 ACRES or 61.2%
(OPEN SPACE, LAKES & BUFFER, EXCLUDING L.W.D. LAT. CANAL L-15 R/W)	
RESIDENTIAL OPEN SPACE, PHASE IA	5.69 ACRES or 19.3%
TOTAL OPEN SPACE, PHASE IA	23.75 ACRES or 80.5%
TOTAL No. LOTS, PHASE IA	33
DENSITY, PHASE IA =	1.10 DWELLING UNITS PER ACRE

48

32/44/42 1000-127
 34
 94

LAKES OF LANTANA

ADAIR & BRADY INC CONSULTING ENGINEERS & LAND SURVEYORS		RECORD PLAT LAKES OF LANTANA PHASE IA	
RICKI	PP-4	1" = 100'	2
JLK		JULY, 1975	2
		FP 1055	
		6-3595	